

Occupational and progressive lenses for visual comfort

Patients will find occupational lenses an ideal complement to their progressive lenses.

Progressive lenses are versatile and indispensable for covering a wide range of near to far distances. But they are not specifically designed to support prolonged periods of closer focus.

With a wider field of vision and shorter viewing distance, HOYA occupational lenses are truly designed for activities indoors. Together with progressive lenses, HOYA occupational lenses can provide your patients with a complete solution for their vision needs.

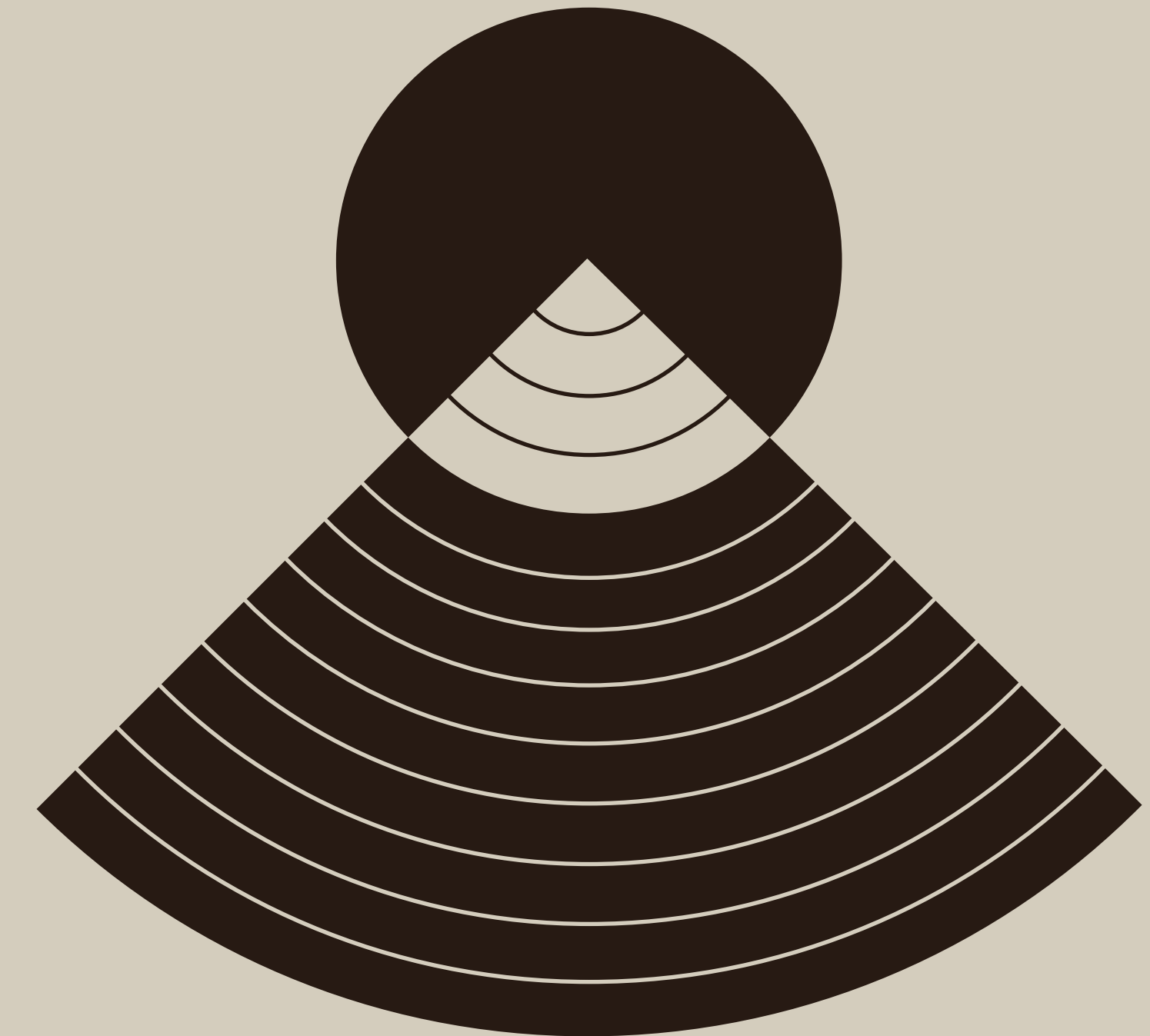
BLUE CONTROL
Offer your patients additional BlueControl coating for even more comfort in a digital world.



HOYA occupational lenses are specially designed for near and intermediate visual tasks, and not intended for tasks which require far distance visual support, e.g. driving or for sport activities.

HOYA's occupational lens portfolio

Feature	Advantage	SUPEREADER	Hoyalux WorkSmart Room	Hoyalux WorkStyle Business	Hoyalux iD WorkStyle 3
AdaptEase Technology	Improved width of visual fields within the area in which the power changes, without any hidden compromise				●
3D Binocular Vision	Controls the unwanted prismatic effect between right and left eye				●
Hoya iDentifier / Total Analysis	Records individual prescription, wearing history, wearing parameters and lifestyle preferences				●
Binocular Harmonization Technology	Taking into account the differences between right & left prescription to balance the design performance				●
Position of Wear Customisation	Including wearing parameters into the lens calculation (FCD, WPA, FFFA, PD and EP)				●
Binocular Eye Model	Design verification method of cooperation between the eyes			●	●
Integrated Double Surface Design	Pixel perfect optimisation for each individual prescription			●	●
View Xpansion Technology	Maximising the visual fields to the periphery of the lenses			●	●
Swim and Sway Reduction	A stable image perception in dynamic situation		●	●	●
QuicFocus	Offers natural head posture with less eye rotation for near work	●	●	●	●



HOYA Occupational Lenses

Offer your patients the right tools for the right vision.

For more information visit www.hoyavision.com/uk or contact your Business Development Manager.

HOYA
FOR THE VISIONARIES

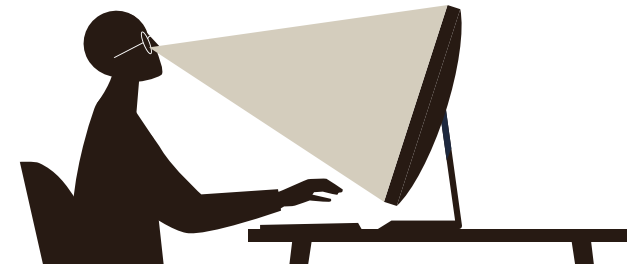
HOYA
FOR THE VISIONARIES



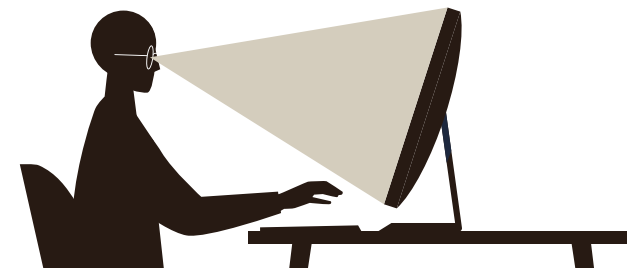
See better, work better

The right tools can really make a difference for the right job. Just as an ergonomic chair can make desk work more comfortable, occupational lenses can support the particular way your patients use their eyes while working at home or in an office.

Patients may not be aware that occupational lenses designed specifically for intermediate and near vision areas can make work easier and more comfortable. They can improve the overall ergonomic experience especially for work that requires a lot of close and intermediate range focus.



Progressive lenses



Occupational lenses

4 designs to suit your patient's needs

HOYALUX iD WORKSTYLE 3

Recommended for wearers of premium progressive designs (e.g. Hoyalux iD designs) and individuals who constantly switch from one device to another at the near to far intermediate distances

- Our most premium lens design
- Up to 6m distance
- Three individual designs that can be selected based on the individual visual preferences
- Excellent for far-intermediate to near field of view

HOYALUX WORKSTYLE BUSINESS

Recommended for wearers with mid-tier progressive designs, e.g. Hoyalux Balansis

- Mid-tier occupational lens design
- Up to 4m distance
- Great for near-intermediate to near field of view

HOYALUX WORKSMART ROOM

Recommended for entry level progressive design wearers, e.g. Daynamic and Amplitude Plus

- Entry occupational lens design
- Up to 4m distance
- Very good for near-intermediate to near field of view

SUPERREADER

Recommended for wearers who want to have more depth of vision for near as compared to single vision near glasses and progressive wearers who completes tasks within a single near distance, without having to change visual focus

- Enhanced reading lens based design
- 2 power variations (SUPERREADER A and SUPERREADER B)
- Up to 1.2m distance
- Good for near field of view

Offer your patients the right lenses for what they do

More than ever, patients are using their eyes at close to intermediate distances.* Without the correct lenses, this can cause digital eye strain symptoms, such as neck pain, headaches or blurred vision.**

HOYA's Occupational lenses are specifically designed to provide better focus and a wider field of vision for close to intermediate range distances.

By offering your patients a second pair of lenses for near and intermediate areas - in addition to their progressives or reading glasses - you provide them with a complete vision solution and added comfort.



* <https://www.mckinsey.com/featured-insights/future-of-work/whats-next-for-remote-work-an-analysis-of-2000-tasks-800-jobs-and-nine-countries#>

** Sanchez-Brau M, Domenech-Amigot B, Brocal-Fernandez F, & Segui-Crespo M. Computer vision syndrome in presbyopic digital device workers and progressive lens design. Ophthalmic Physiol Opt. 2021. <https://doi.org/10.1111/oppo.12832>

Benefits for your patients:

- Ergonomic position during near and intermediate distance activities which can prevent Digital Eye Strain symptoms
- Improved visual comfort at the near and intermediate distances
- A complete visual solution for presbyopic patients, especially with high addition and reading glass wearers

Benefits for you:

- More satisfied patients thanks to the availability of a total visual solution specifically recommended based on patient activities
- Maximising sales opportunity and potential by selling an additional pair of glasses